

Comptake Technology Inc.

2022  
COMPANY PROFILE



ABOUT



## SERVICES WE PROVIDE

Professional thermal solution provider

CompTake specialize in OEM/ODM projects, and provide all kinds of customized thermal solution.



Other Processes: CNC, Die-casting, Extrusion molding, Customized process



## TAIPEI HEADQUARTER (HQ)

Established in 2004 by a group of experienced thermal experts.

Current capital : USD 2,700,000

# 150+

Current employees

# 6,239 m<sup>2</sup>

Facility Area



ISO 9001 : 2015



ISO 14001 :2015



RBA 6.0

# YILAN FACTORY

Established in 2017 (Q2)

Employees : 60+

ISO 9001 : 2015

ISO 14001 : 2015

RBA 6.0

Facility Area : 7,590 m2

## 5+ Million

Heat spreaders / month

## 6+ Million

SSD housings / month




# MAJOR CUSTOMERS





# FACTORY

 **CompTake**  
Technology Inc.



# STAMPING

## 160T Double-Crank

Qty : 3 units  
Capacity (H/S PCS) :  
4.3K/Hour, 86K/Day , 2.25M/Month

## 110T Single-Crank

Qty : 8 units  
Capacity (H/S PCS) :  
17K/Hour, 345K/Day , 9M/Month

## 110T Double-Crank

Qty : 2 units  
Capacity (H/S PCS) :  
3.8K/Hour , 77K/Day , 2M/Month





# TOOLING MODIFICATION

Lapping Machine: 3  
Milling Machine: 1  
Drilling Machine: 2  
Grinder : 2  
Abrasive Belt Machine : 2



# TAPPING

## Automatic Machine

Qty: 2 units  
Capacity (PCS) :  
4.8K/Hour, 96K/Day, 2.5M/Month

## Manual Machine

Qty: 8 units  
Capacity (PCS) :  
4K/Hour, 80K/Day, 2M/Month



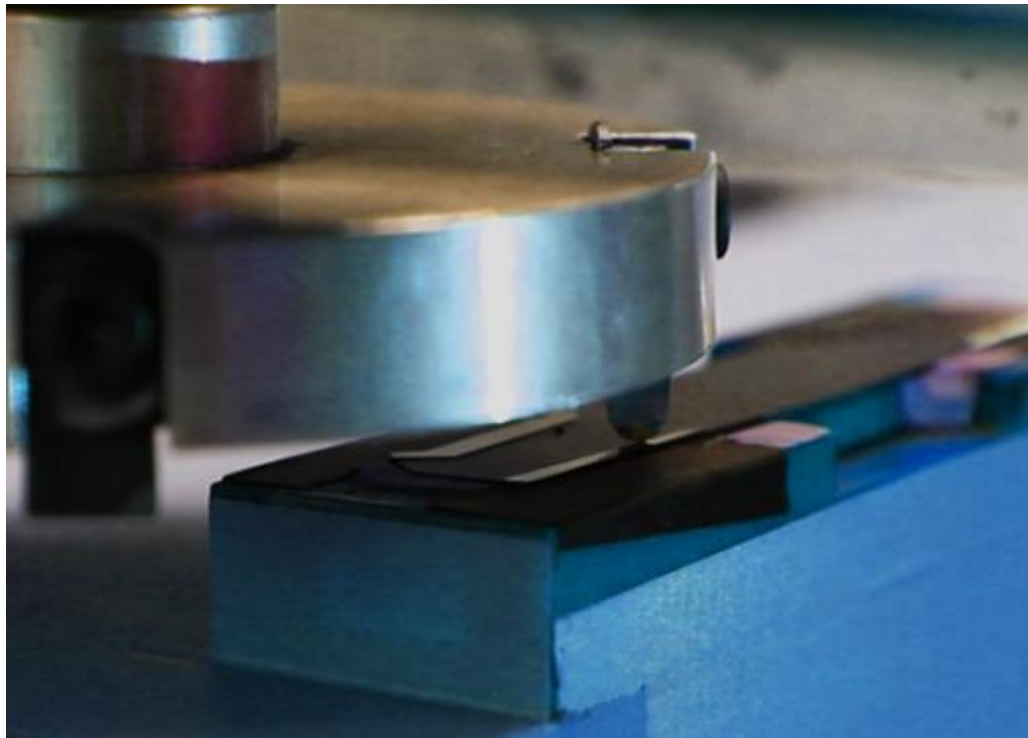
# AUTOMATED RIVETING

Qty: 2 units

Capacity (PCS) :  
1.8K/Hour, 36K/Day, 936K/Month







## DIAMOND CUTTING

Qty: 15 units  
Capacity (PCS) :  
7.5K/Hour, 150K/Day, 3.9M/Month

---



## LASER CARVING

Qty: 4 units  
Capacity (PCS) :  
3.6K/Hour, 72K/Day, 1.8M/Month

CNC Machine



Anodizing



# Automated Pad Pasting Machine

Qty: 2 units

Capacity (PCS) :

800/Hour, 16K/Day, 416K/Month



## Automated Marking Machine





Packing Line



# QUALITY CONTROL EQUIPMENT

- Roughness Tester
- Gloss Meter
- Colorimeter
- Coating Thickness Gauge
- Salt Spray Tester
- X-ray Thickness meter
- Cross-cut Tester
- Abrasion Tester
- Pitch Caliper
- Force Gauge
- Constant Temperature and Humidity Chamber (Programmable)
- Automatic Video Measuring Machine
- Vertical Optical Comparator
- CPU Cool Performance Test Machine
- Thermal Simulation Chamber Temperature Recorder
- Wind Tunnel
- Wide-Area 3D Measurement System



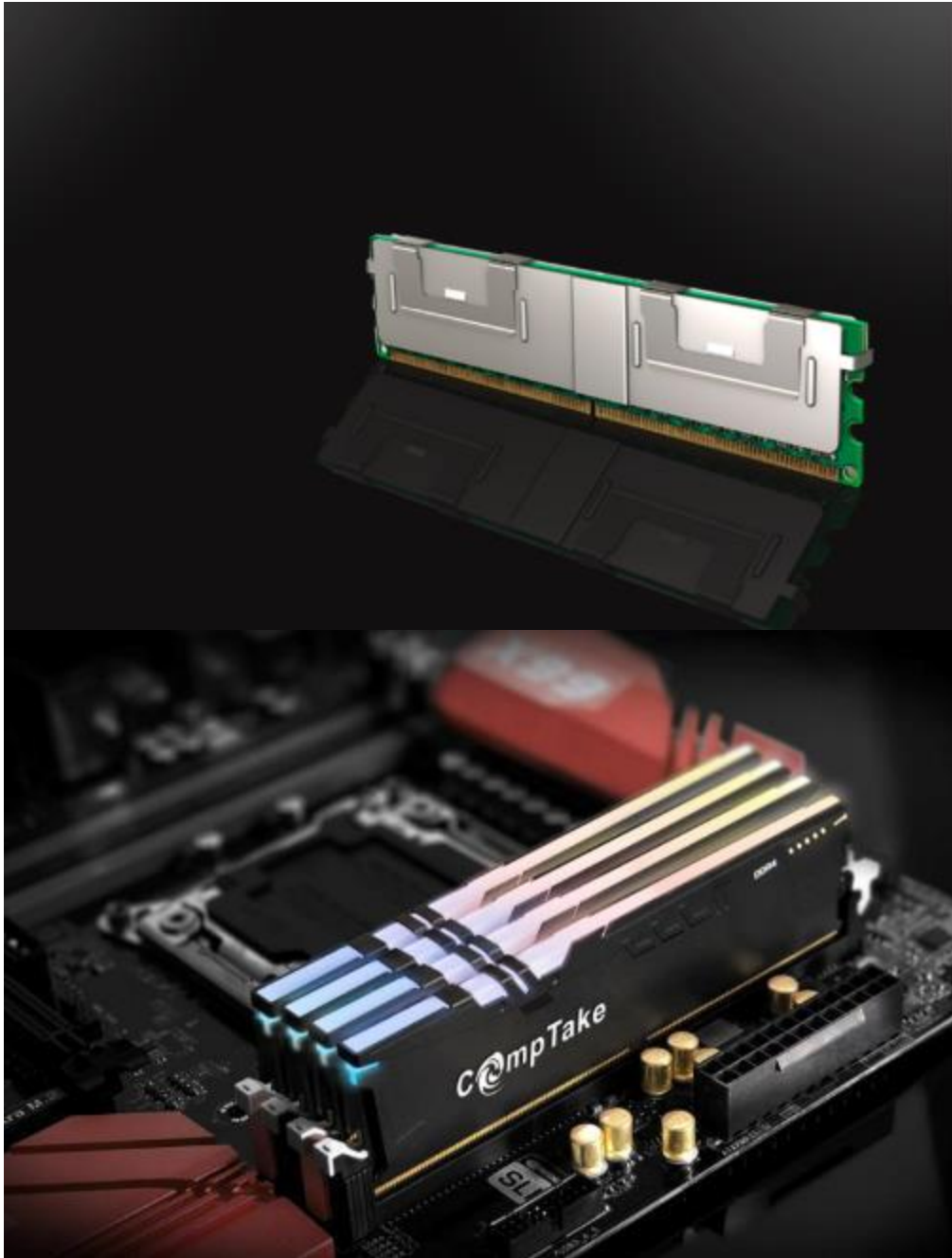
# PRODUCT LIST





# DDR RAM HEAT SINK

Material	Aluminum
Process	Stamping Die Casting
Finish	Anodizing Painting Electroplating Hair Line
Artwork	Sticker Diamond Carving Laser Carving Silk Printing



# SSD

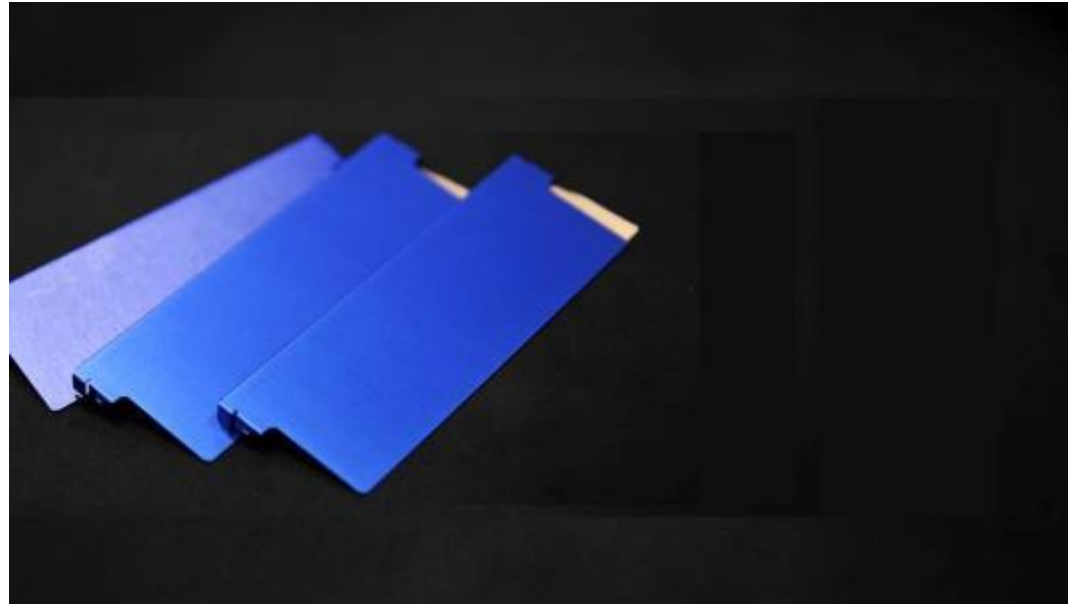
## Standard Housing Screw-less Housing

Material	Aluminum
Process	Stamping Die Casting
Finish	Anodizing Painting Electroplating Hair Line
Artwork	Sticker Diamond Carving Laser Carving Silk Printing



## SO DIMM HEAT SINK

Material	Aluminum
Process	Stamping Die Casting
Finish	Anodizing Painting Electroplating Hair Line
Artwork	Sticker Diamond Carving Laser Carving Silk Printing

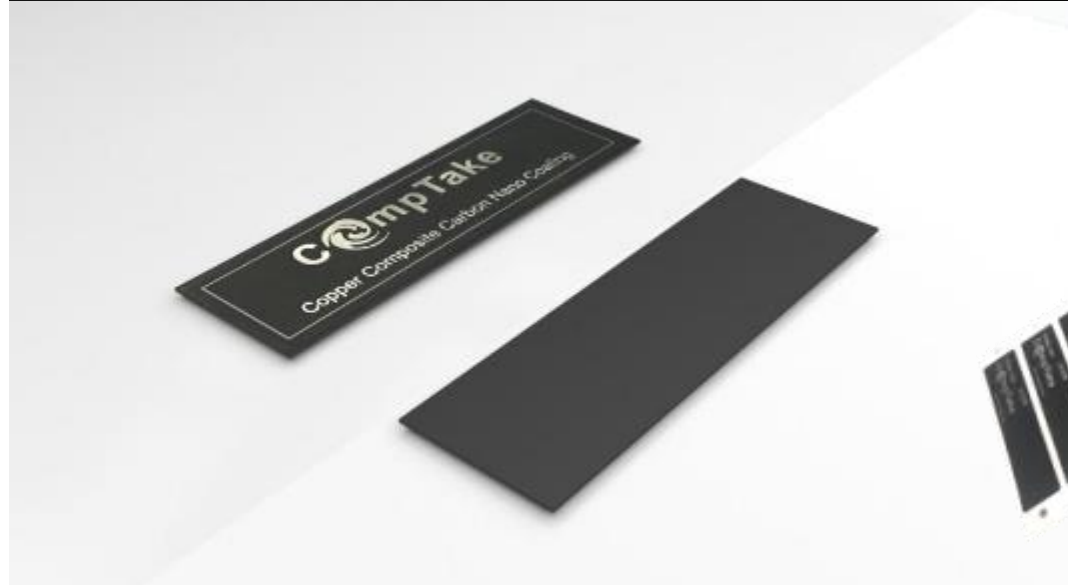


### Customizable

- ✓ M.2 : 2260/2280/22110
- ✓ SO-DIMM
- ✓ Other customized shape

## CARBON COPPER NANO

Material	Carbon nano composite copper foil vacuum sputtering
Total Thickness	0.26mmT / 0.15mmT
Surface Treatment	Laser Carving Silk Printing





# M.2 SSD HEAT SINK

Material Aluminum

Process Extrusion molding

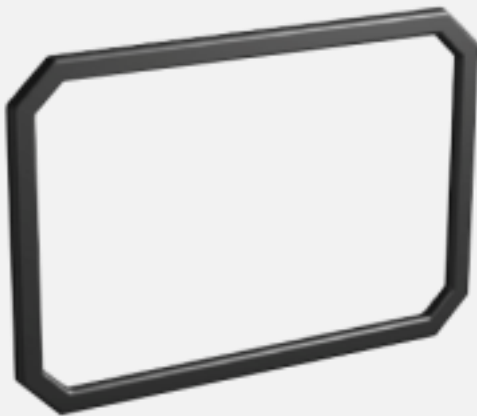
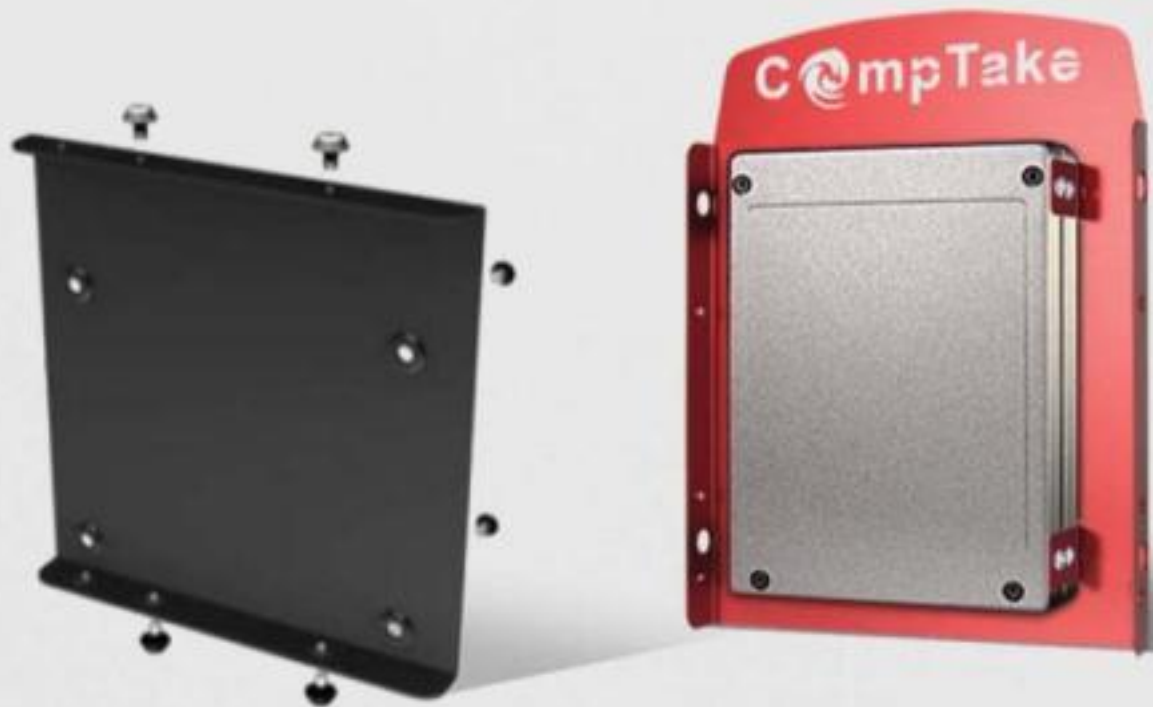
Finish Anodizing

Artwork  
Sticker  
Diamond Carving  
Laser Carving  
Silk Printing



# BRACKET

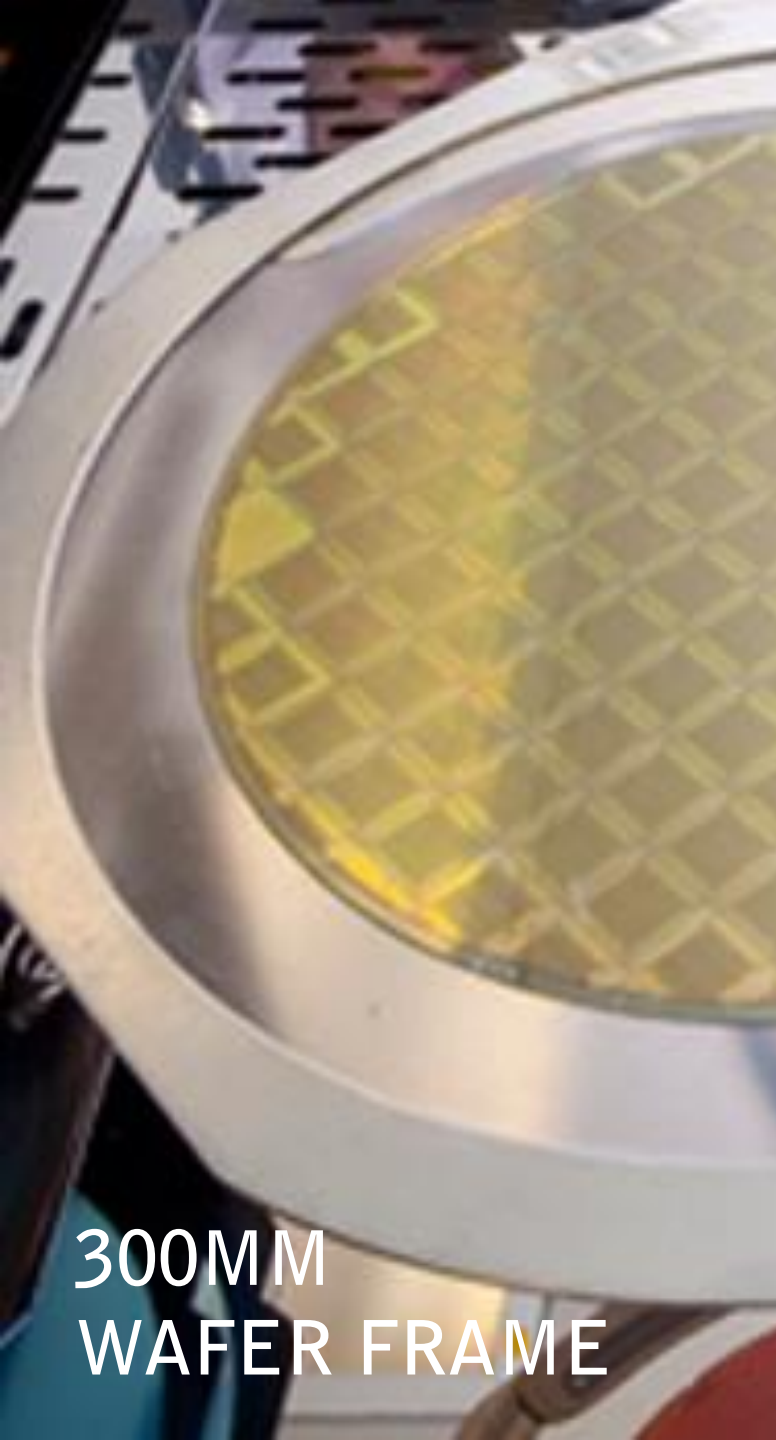
Material	Aluminum
Process	Stamping
Finish	Anodizing Painting
Artwork	Sticker Laser Carving Silk Printing



# SPACER RING

Material	ABS
Color	Color selection available upon request





300MM  
WAFER FRAME



Grinding Polish



Grinding Matte



Electro-Polishing



Nickel Plating



THANK YOU FOR YOUR ATTENTION

CompTake  
亞細亞